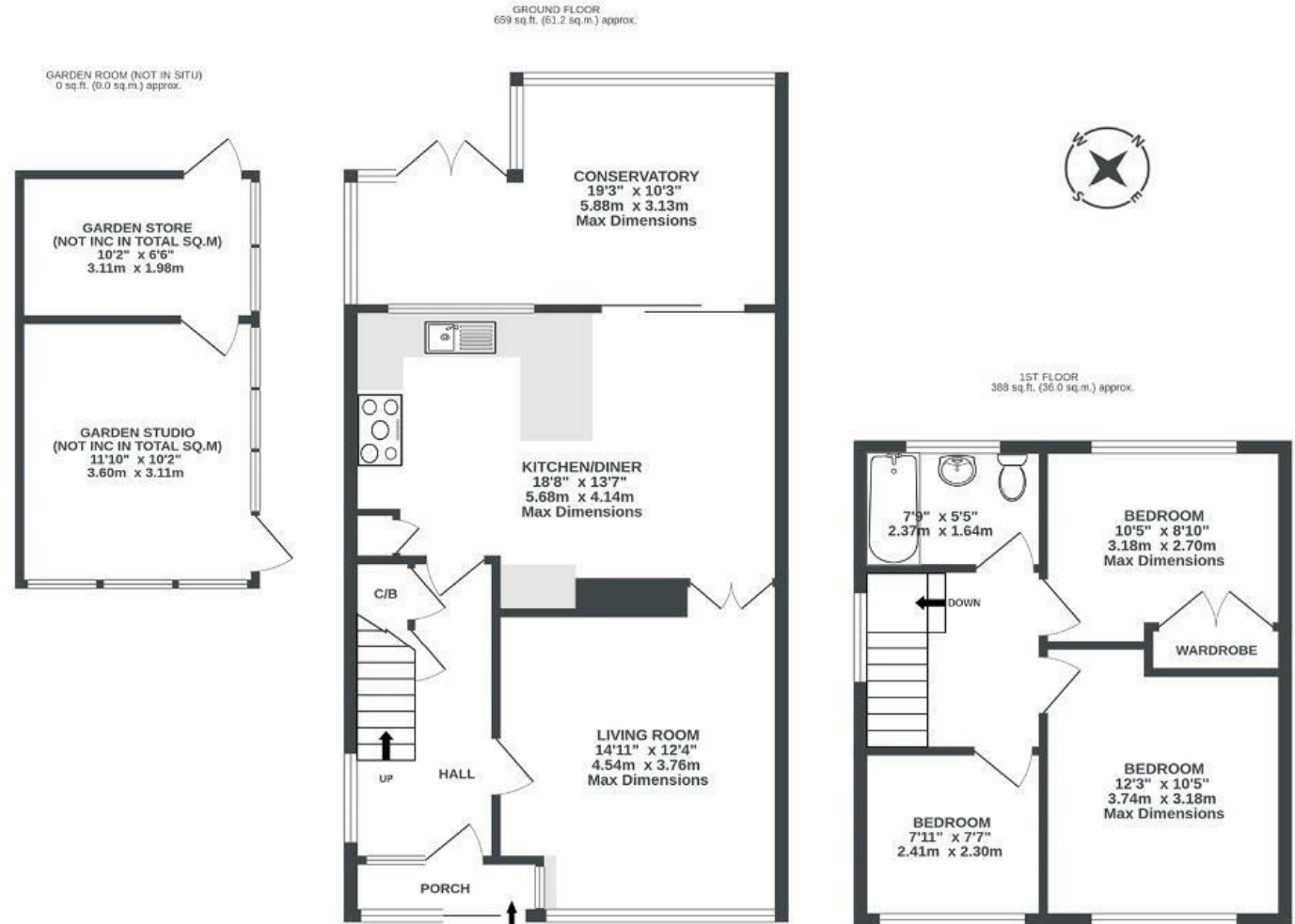


# Englands Crescent

## WINTERBOURNE

APPROXIMATE FLOOR AREA  
97.3 SQM / 1047 SQFT



Illustrations are for reference purposes only, measurements are approximate, not to scale.

Boardwalk

# Englands

WINTERBOURNE, BRISTOL



£375,000



3 Bedrooms



BS36 1NN



1 Bathrooms

*"Its a great sunny family house, with bags of potential and set in a fantastic cul-de-sac. The garden has been a real highlight, which I have renovated since I moved in, and the outbuilding has been amazing for working from home."*

